



## REPLACEMENT GARAGE DOORS

### STEP 1: SELECT STEEL & INSULATION OPTION

Danley's Garage Doors are built with a heavy steel exterior that results in a durable, reliable and low maintenance garage door. A layer of insulation is typically included for garage doors installed in garages attached to the home to help retain energy efficiency. Detached garages with insulated walls will also include an insulated garage door. Insulated garage doors contain a Polystyrene layer that helps your home maintain temperatures in hot and cold seasons.

#### **1000 Series** - Single Layer of Steel (Insulation Optional)



#### **2000 Series** - Double Layer of Steel + Insulation



### STEP 2: SELECT LIFTMASTER OPENER MODEL

#### **WiFi Chain Drive Opener:**

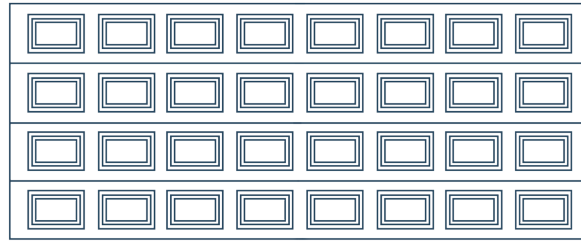
- 3 Button Remote
- Industrial-strength chain drive
- Works with Amazon Key for secure in-garage delivery of Amazon packages
- Wireless Keyless Entry with smartphone control using myQ app

#### **WiFi Ultra Quiet Belt Drive Opener:**

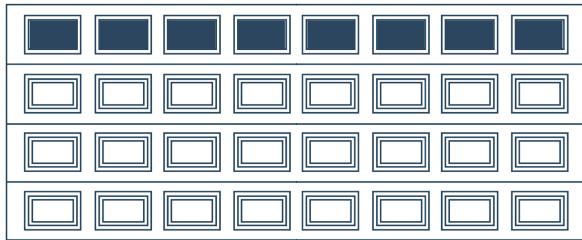
- Ultra Strong Belt Drive
- Ultra Quiet Motor with soft close operation
- Works with Amazon Key for secure in-garage delivery of Amazon packages
- Wireless Keyless Entry with smartphone control using myQ app
- Built-in camera adds video and 2-way audio to myQ app



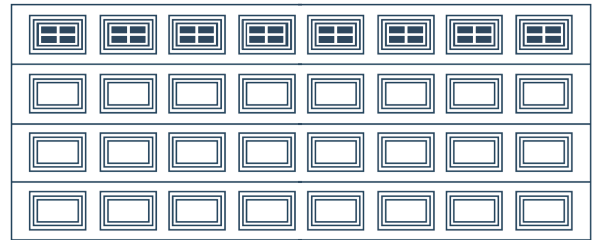
### STEP 3: SELECT WINDOW OPTION FOR ADDITIONAL NATURAL LIGHT



NO GLASS INSERTS

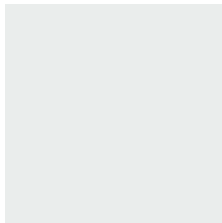


PLAIN GLASS INSERTS

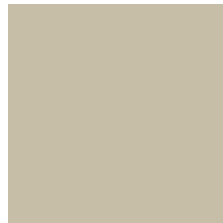


STOCKTON GLASS INSERTS

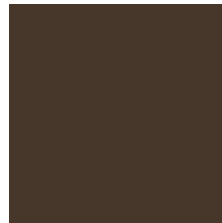
### STEP 4: SELECT COLOR



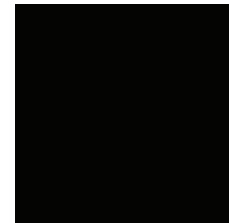
WHITE



DESERT TAN



BROWN



BLACK

**PROUD SUPPLIER OF C.H.I. OVERHEAD DOORS**

# Danley's<sup>®</sup>

**DANLEYS.COM 877-DANLEYS™**

Danley's has been the leading garage builder in Chicago since 1959. Experienced installation and outstanding service are the core values of Danley's family-owned business. Danley's uses only high-quality garage doors manufactured in the USA. All Danley's garage doors come with a limited lifetime warranty against rust of the door panels as long as the original owner owns the home, a 3-year warranty for hardware and springs and a one-year labor warranty.